



Installation Instructions FORD SUPER 8.8" DIFFERENTIAL COVER

Fits Ford Trucks & SUVs with Super 8.8" axle
For specific vehicles, see "Applications" tab on this product's webpage.

Catalog # 41296

Rev. 05/22/19

WORK SAFELY! For maximum safety, perform this installation on a clean, level surface and with the engine turned off. Place blocks or wedges in front of and behind both rear wheels to prevent movement in either direction.

CAUTION: To avoid any possibility of bodily injury or damage to vehicle, do not attempt installation until you are confident that the vehicle is safely secured and will not move.

INTRODUCTION

This B&M cast aluminum rear end cover has been designed to work on most Ford trucks and suv's with the Super 8.8 style axle. The cover provides several advantages over stock factory covers. The extra capacity provides increased oil volume and added cooling, while the thick aluminum construction increases case rigidity. The reinforced center bar, along with the load bolts prevents bearing cap deflection under severe loads. The magnetic drain plug feature allows regular gear oil changes without the usual mess and limits ferrous debris from circulating in the axle.

This rear end cover can be installed in about an hour by carefully following the instructions. It is suggested that the vehicle be allowed to cool off for a few hours to avoid burns from hot oil and parts. The vehicle should be off the ground for ease of installation - jack stands, wheel ramps or a hoist will work fine. **MAKE SURE VEHICLE IS FIRMLY SUPPORTED - DO NOT WORK UNDER A VEHICLE IF IT IS SUPPORTED BY ONLY A JACK!** Try to raise the vehicle 1-2 feet so you will have plenty of room to work. Also, have a small box to put bolts in and a drain pan to catch oil.

INSTALLATION

1. Clean the axle housing cover area from dirt and other debris.

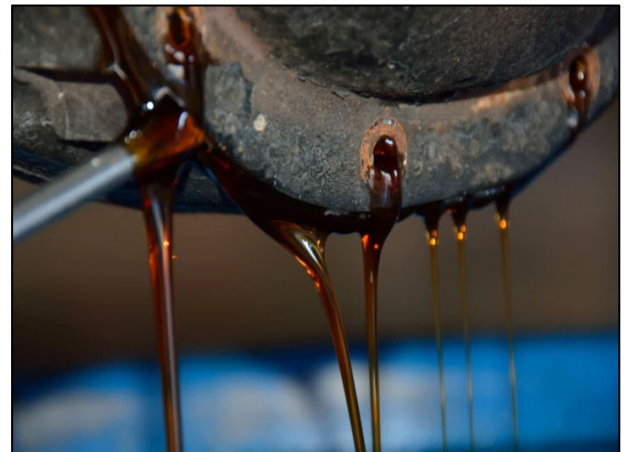
NOTE: On some vehicles it might be necessary to remove some parts (e.g. sway bar, panhard bar) to make the installation of the cover easier.

2. Place a drain pan underneath the axle housing.

3. Remove all the bolts except one at the top. Loosen the remaining bolt but do not remove.

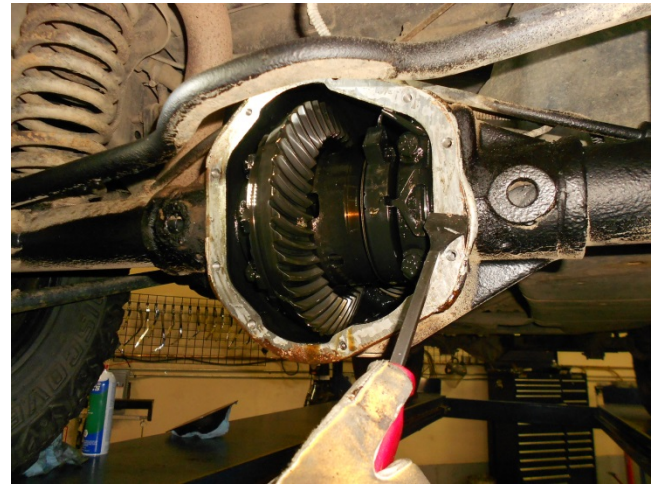
4. Carefully pry the cover loose with flat head screw driver, being careful not to damage the surface, and allow the oil to drain.

5. Remove the last bolt and the cover once completely drained



6. Using a dry lint free rag, clean the accessible area of the axle housing and check the internal components for visible excessive wear or other problems.

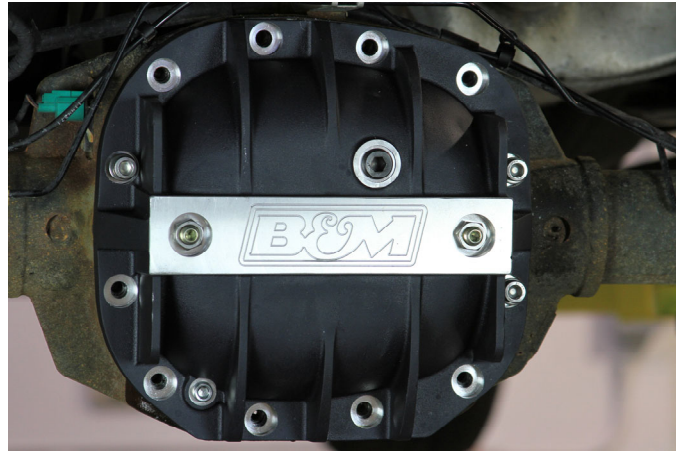
7. Clean all gasket material from the axle housing surface and wipe clean.



8. Screw in the load bolts from the inside of the cover until they make contact with the boss, then next apply a bead of RTV silicone gasket maker to the B&M differential cover. Run the bead inside the bolt holes. If your vehicle has a reusable gasket it may be reused but check condition of it.



9. Install the B&M differential cover on the axle housing using the 3 OE/stock studs on top right side of cover & the supplied allen bolts and washers. The original stud fasteners are required to accommodate the factory wiring clips/brackets clips/brackets. Torque to factory specs.



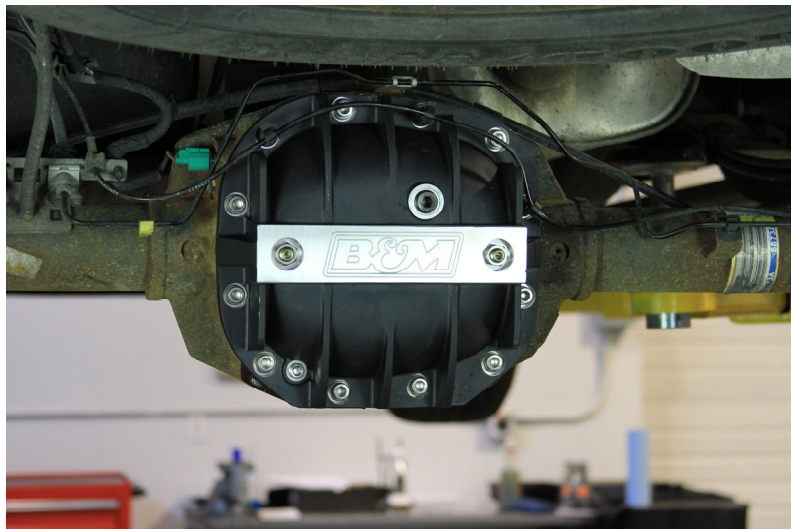
10. Install the supplied magnetic 1/4" NPTF drain plug on the B&M Diff Cover and tighten.

11. Fill with factory recommended gear oil through the B&M fill plug. !!!IMPORTANT!!! The oil level needs to be set to the bottom of the OE fill plug hole on the differential housing. Not the fill hole on the cover.

12. Screw in the two load bolts by hand until they touch the bearing caps. Torque the load bolts to a maximum of 5 ft/lbs.

NOTE: Do not over torque the load bolts as you run the risk of distorting the bearing caps, creating abnormal wear and premature failure.

13. Apply a very small amount of RTV on the threads of the load bolts and install on the two supplied jam nuts on the load bolts. Torque the jam nuts to 5 ft/lbs.



Parts List	Tools List
(1) B&M Super 8.8 Diff Cover (2) ½"-13 Load Bolts (2) ½"-13 Jam Nuts (1) ½" NPT Fill Plug (1) ¼" NPTF Drain Plug (9) M10-1.50 x 25mm Bolts (9) M10 Flat Washers (1) 6" Plastic Tie Wrap	Jack & Jack Stands Drain Pan Rags RTV Silicone Gasket Maker Gear Oil Gear Oil Pump 3/8" Ratchet & 3" Extension 1/4" Allen 13 mm Socket ¾ Socket Flat Blade Screwdriver 8 mm Allen 3/8 Allen

IMPORTANT: RETAIN THESE INSTRUCTIONS FOR FUTURE REFERENCE

Technical Support

A highly trained technical support department is maintained by B&M Performance to answer your technical questions, provide additional product information and offer various recommendations.

Technical support calls, correspondence, and warranty questions should be directed to:



B&M Performance & Off-Road

(866) 464-6553

www.bmracing.com