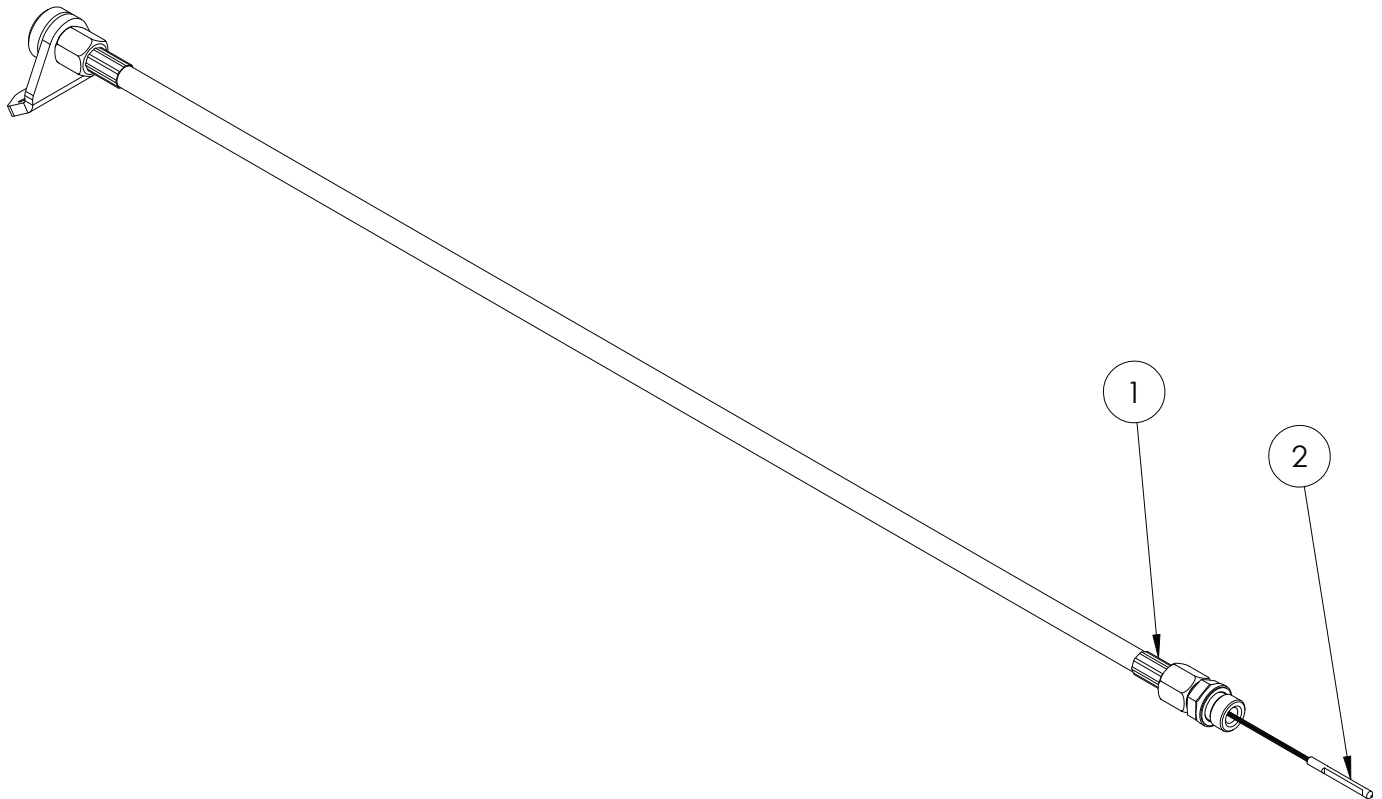




Installation Instructions
22173
2015-21 GM 1500 TRUCKS & 2015-21
GM SUVS
with 8L90E Transmission
2017-21 COLORADO & CANYON
with 8L45 Transmission

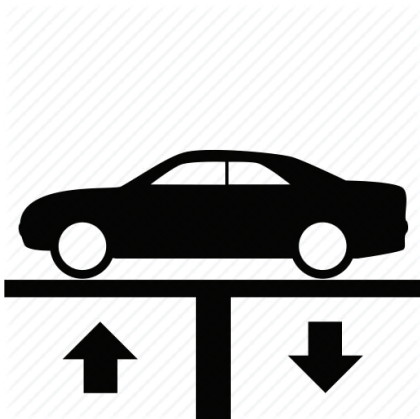


ITM #	PART #	DESCRIPTION	QTY.
1	1601021	Tube	1
2	1601022	Dipstick	1
N/A	22173BA-01	Hardware Package includes:	1
3	3401568	#10 x 1" Self Stapping Screw	3
4	3401602	Zip Tie	2

OVERVIEW:

1. Thank you for purchasing a B&M Transmission Dipstick. This kit uses a 36-in. long dipstick tube (braided hose), which may fit other vehicles with 8L90E. Please verify your vehicle's transmission model and check that proper tube routing and mounting location can be achieved in your vehicle.
2. Take a moment to read and understand these instructions before installing your performance kit. Reference drawing and parts list to verify kit contents.
3. Automatic transmission fluid level will vary at different temperatures and operating conditions. Consult your vehicle's service manual or your dealer's service department regarding correct procedure for consistently checking automatic transmission fluid level and condition.

REMOVE TRANSMISSION COVER:

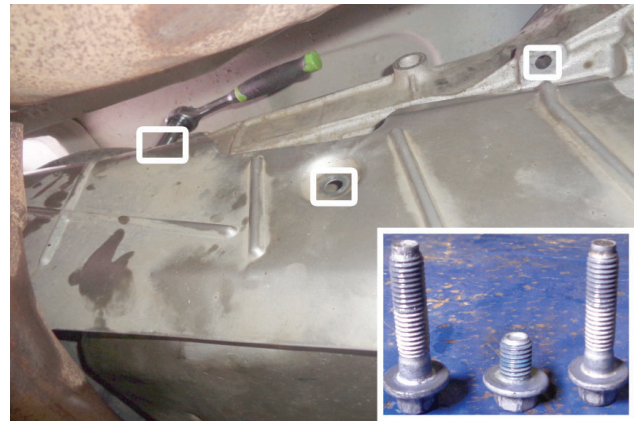


NOTE: Your vehicle must be level, for stability and to obtain an accurate fluid level.

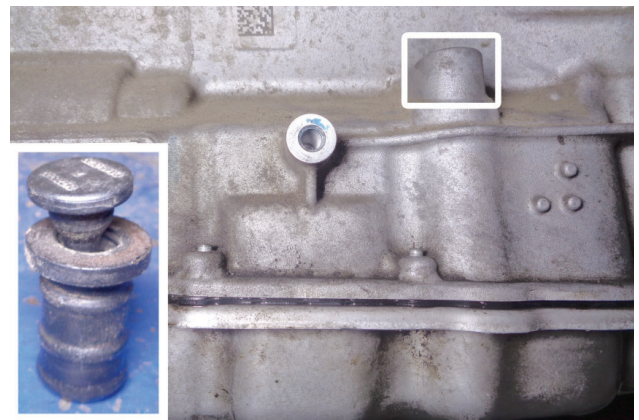
4. Raise vehicle up on a hoist or rack to working height. If you don't have access to a hoist or rack, raise vehicle and support securely with jack stands, then allow vehicle to cool before continuing.

WARNING

To avoid bodily injury or vehicle damage, chock wheels and do not attempt installation until you are confident your vehicle will not move.

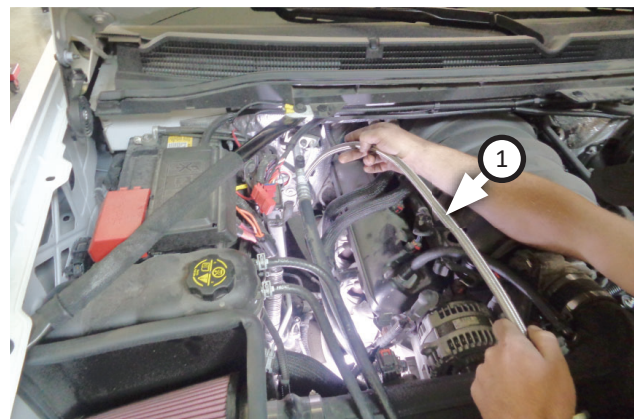


5. Remove bolts (x3) attaching cover to passenger side of transmission. Retain for later use.



6. Release fill plug cap then remove it from passenger side of transmission.

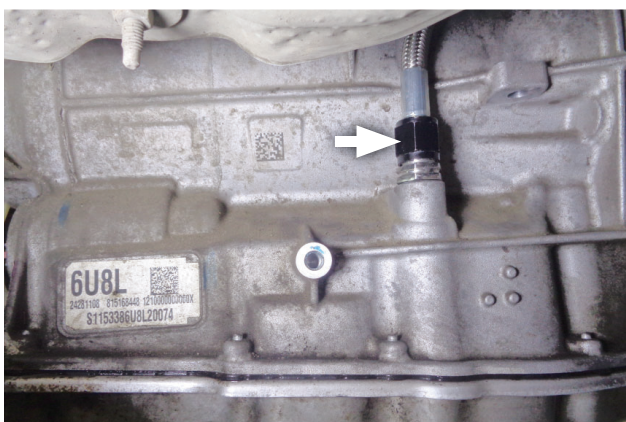
INSTALL TRANSMISSION DIPSTICK:



7. Place **tube (1)** into vehicle near engine firewall.



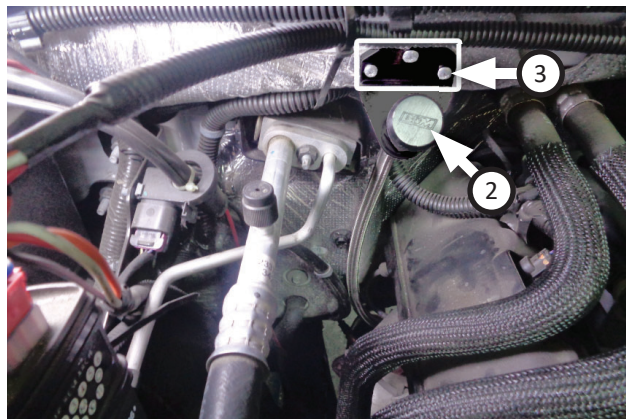
8. Find a suitable route for tube. Keep tube from touching exhaust components, as extreme heat can damage tube. Also keep tube from touching wires, brake lines, etc., as steel braid may cause chafing damage.



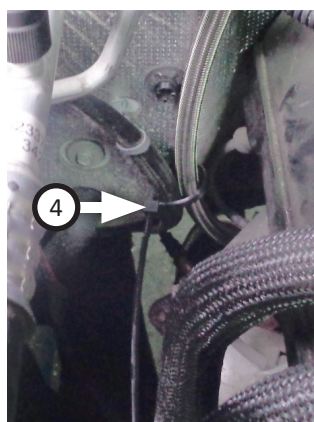
9. Push tube into fill port on passenger side of transmission until it's fully seated.



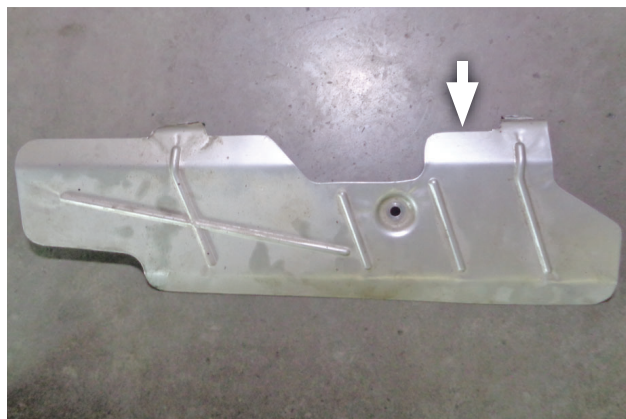
10. Arrange tube so there are no kinks along its length then set mount on firewall. Repeatedly remove and insert dipstick into tube to ensure it won't bind once tube is secured.



11. Install mount using (x3) **self tapping screws (3)**, checking for bindings in tube as each screw is fastened, then install **dipstick (2)** into tube and tighten it (until o-ring is compressed).



12. Use (x2) **zip ties (4)** to secure dipstick assembly. Make sure tube remains as straight as possible.



13. **OPTIONAL:** If cover won't re-install properly, you may have to trim or bend a portion of its front flange.



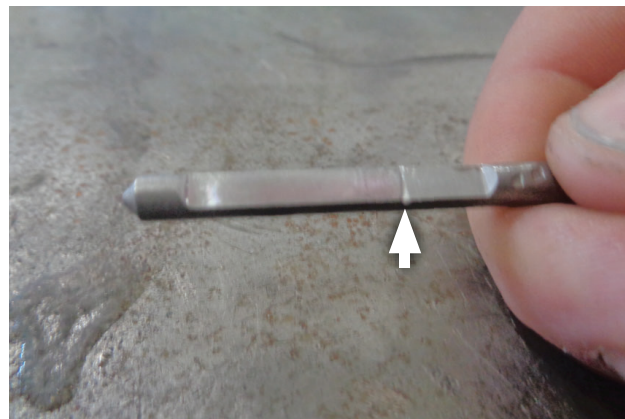
14. Install bolts (x3) to fasten cover (removed step 5) to passenger side of transmission.

MARK TRANSMISSION FLUID LEVEL ON DIPSTICK:

WARNING

There is a risk of personal injury while working near engine and transmission with vehicle running. Wear properly fastened and close-fitting work clothes. Do not touch hot or rotating parts.

15. Prior to marking fluid level on B&M dipstick, perform a fluid level check using recommended GM transmission service procedures to confirm transmission fluid level is within GM specifications. Once you've confirmed the trans fluid is at the proper level, proceed to Step 16.
16. Once you have completed transmission fluid level check, remove dipstick and mark current fluid level on it. This will be your reference for future vehicle maintenance.
17. **DIPSTICK USE:** To accurately monitor your transmission fluid level, it is important to always follow the same procedure when checking it:
- Check transmission fluid level at operating temperature. If necessary, drive vehicle for 10-15 minutes to bring transmission up to temperature.
 - Park on level ground. With vehicle running at idle, slowly move gear shift level from PARK down through entire gear range, then back to PARK again, stopping for a few seconds at each gear position. With transmission in PARK, leave vehicle running at idle.
 - Remove dipstick, wipe it off and reinstall it (with knob fully hand tight). Then remove dipstick again to check fluid level.



18. If your transmission fluid is low, top it off according to vehicle manufacturers procedure, which may be available through vehicle owners manual, dealers service department or website.

19. **ADDING TRANSMISSION FLUID:** Only use transmission fluid specified by your vehicle's manufacturer.

- Add transmission fluid slowly using tube and pump or funnel, checking often to avoid over-servicing.
- If you should over-service transmission, disconnect lower end of dipstick tube and suck fluid from transmission using a vacuum pump.



Congratulations, the installation of your B&M Locking Transmission Dipstick is now complete!

