

ITM #	PART #	DESCRIPTION	QTY.
1	4001801	Handle Body	1
2	4001492	Left Shifter Plate	1
3	4001495	Right Shifter Plate	1

ITM #	PART #	DESCRIPTION	QTY.
N/A	81230BA	Hardware Package includes:	1
4	3401544	¼ - 28 x ⅜" Set Screw	2
5	3401537	6 - 32 x ⅜" Screw	4

## OVERVIEW:

Thank you for purchasing **XDR Shifter Handle**. This kit comes in four different color schemes, each one given a unique part number: Black (**81230**), Green (**81231**), Orange (**81232**) and Blue (**81233**). The following assembly instructions apply to all color variations of this product.



1. Please take a moment to read and understand these instructions before installing your purchased performance kit. Use parts drawing and list to verify kit contents.

## REMOVE STOCK SHIFTER COMPONENTS:



2. Turn off vehicle and chock tires, then carefully remove stock shifter handle.

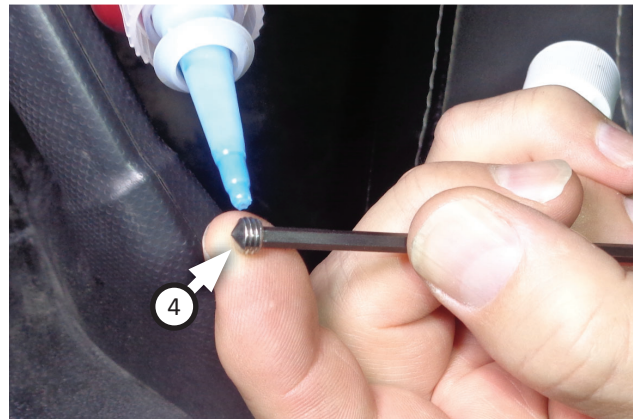


3. Remove stock nut from shifter stem.

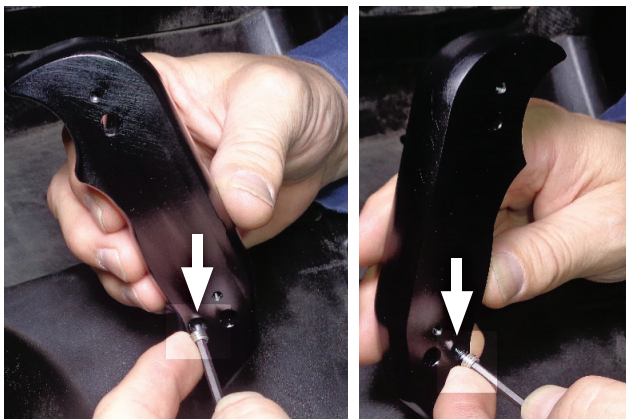
## INSTALL YOUR XDR SHIFTER HANDLE:



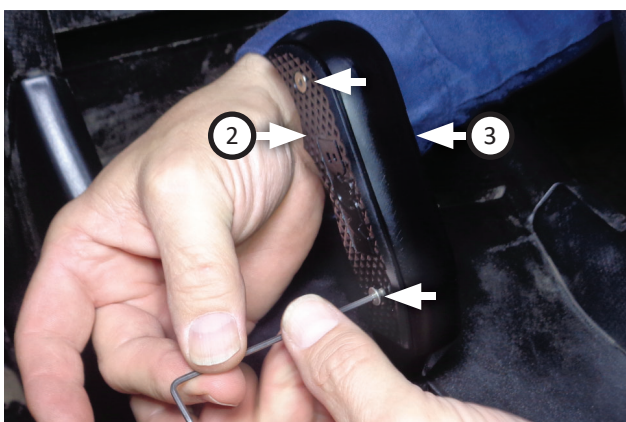
4. Thread **handle body (1)** onto shifter stem. Tighten it fully until it faces dashboard.



5. Apply loktite to (x2) **set screws (4)**.



6. Install set screws onto handle body as shown.



7. Install **left (2)** and **right (3)** shifter plates onto handle body using (x4) screws (5).



Congratulations, the installation of your **XDR Textron Wildcat Shift Handle** is now complete!

## SHOP MORE XDR PRODUCTS:

XDR is a Powersports division resulting from a joint effort by B&M Racing and Flowmaster to provide customers with the ultimate in off-road performance. To access a full range of XDR SXS/UTV products (like those pictured below) visit the website listed at the bottom of the page.

