

| ITM # | PART # | DESCRIPTION | QTY. |
|-------|---------|---------------------|------|
| 1 | 4001801 | Handle Body | 1 |
| 2 | 4001492 | Left Shifter Plate | 1 |
| 3 | 4001495 | Right Shifter Plate | 1 |

| ITM # | PART # | DESCRIPTION | QTY. |
|-------|---------|----------------------------|------|
| N/A | 81230BA | Hardware Package includes: | 1 |
| 4 | 3401544 | ¼ - 28 x ⅜" Set Screw | 2 |
| 5 | 3401537 | 6 - 32 x ⅜" Screw | 4 |

OVERVIEW:

Thank you for purchasing **XDR Shifter Handle**. This kit comes in four different color schemes, each one given a unique part number: Black (**81230**), Green (**81231**), Orange (**81232**) and Blue (**81233**). The following assembly instructions apply to all color variations of this product.



1. Please take a moment to read and understand these instructions before installing your purchased performance kit. Use parts drawing and list to verify kit contents.

REMOVE STOCK SHIFTER COMPONENTS:



2. Turn off vehicle and chock tires, then carefully remove stock shifter handle.

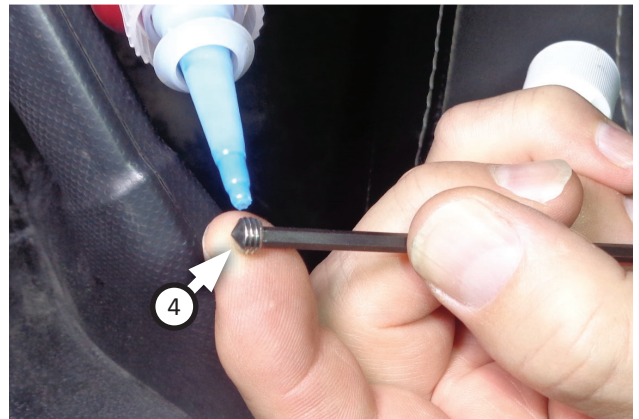


3. Remove stock nut from shifter stem.

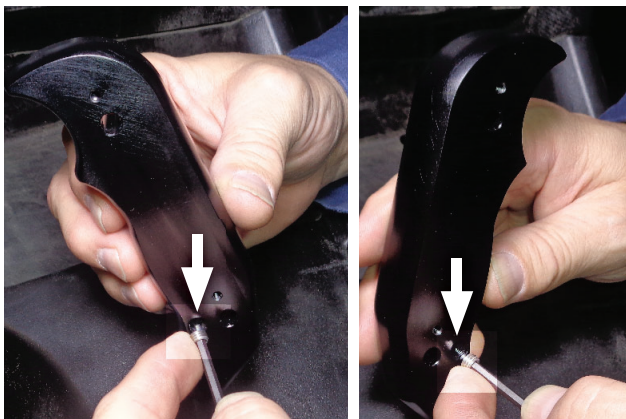
INSTALL YOUR XDR SHIFTER HANDLE:



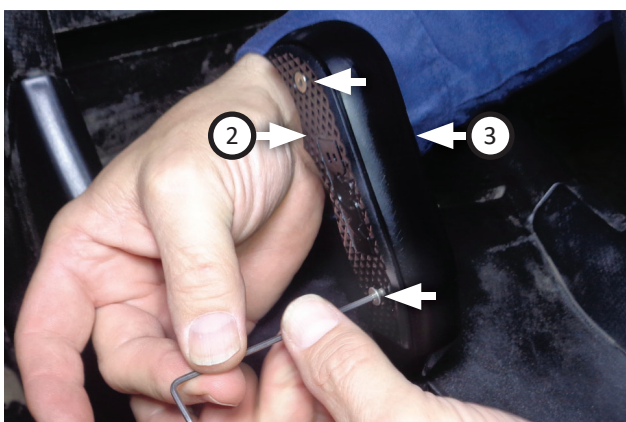
4. Thread **handle body (1)** onto shifter stem. Tighten it fully until it faces dashboard.



5. Apply loktite to (x2) **set screws (4)**.



6. Install set screws onto handle body as shown.



7. Install **left (2)** and **right (3)** shifter plates onto handle body using (x4) screws (5).



Congratulations, the installation of your **XDR Textron Wildcat Shift Handle** is now complete!

SHOP MORE XDR PRODUCTS:

XDR is a Powersports division resulting from a joint effort by B&M Racing and Flowmaster to provide customers with the ultimate in off-road performance. To access a full range of XDR SXS/UTV products (like those pictured below) visit the website listed at the bottom of the page.

