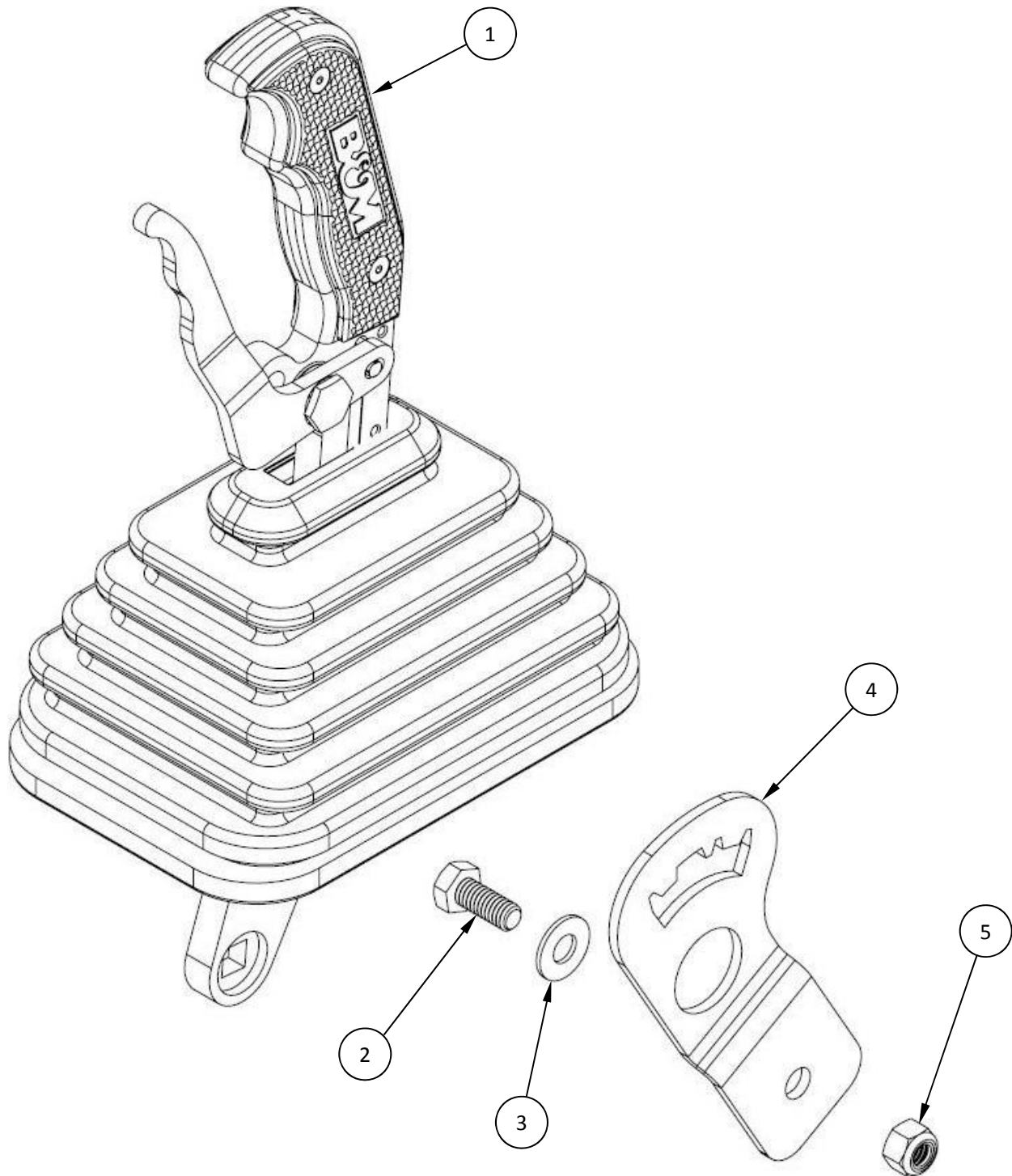


Installation Diagram
81151
MAGNUM GRIP GATED SHIFTER
2014-20 POLARIS RZR RS1,
900, 1000 & TURBO
models with factory shift boot





Installation Instructions
81151
MAGNUM GRIP GATED SHIFTER
2014-20 POLARIS RZR RS1,
900, 1000 & TURBO
models with factory shift boot

PARTS LIST

ITEM NO.	PART NO.	DESCRIPTION	QTY.
1	N/A - SHIPS ASSEMBLED	SHIFT LEVER ASSEMBLY, POLARIS RZR, 2014-2019, WITH BOOT	1
N/A	4001496	• STICK, MAGNUM GRIP GATED SHIFTER, POLARIS RZR	1
	4001740	• PIN, SELECTOR STOP, GATED SHIFTER POLARIS RZR	1
	4001492	• MAGNUM GRIP SIDE PLATE, LEFT, DIAMOND KNURL, BLACK	1
	4001495	• MAGNUM GRIP SIDE PLATE, RIGHT, DIAMOND KNURL, BLACK	1
	4001737	• PIVOT SLEEVE, MAG GRIP GATED SHFTR POLARIS RZR, LATE	1
	4001497	• SPRING, SELECTOR POLARIS RZR	1
	3401537	• SCREW, 6-32 x 5/16", FLAT SOCKET HEAD	4
	3401559	• PIN, DOWEL M5 X 18MM MCM #91585A553	1
	3400533	• WASHER, CURVED SPRING, #U375-0100S	1
	4001482	• LEVER, LOCKING, BLK ANODIZE M-GRIP BLACK	1
	4001393	• BOLT, SHOULDER CHROME	1
	4001739	• SHIFTER BOOT, MAGNUM GRIP GATED SHIFTER POLARIS RZR	1
2	3401561	SCREW, 5/16"-18 x 3/4" HEX HEAD	1
3	3401562	WASHER, 5/16" FLAT	1
4	4001738	GATE, MAGNUM GRIP GATED SHIFTER POLARIS RZR, LATE	1
5	3401560	NUT, NYLOCK, 5/16"-18	1

Before starting, take a moment to read and understand these instructions for your B&M Magnum Grip Gated Shifter. Use the parts drawing and list to verify your kit's contents. In the unlikely event of missing parts, please contact B&M Technical Support for replacements.

We highly recommend that you retain all factory parts.

REMOVE THE STOCK SHIFTER:

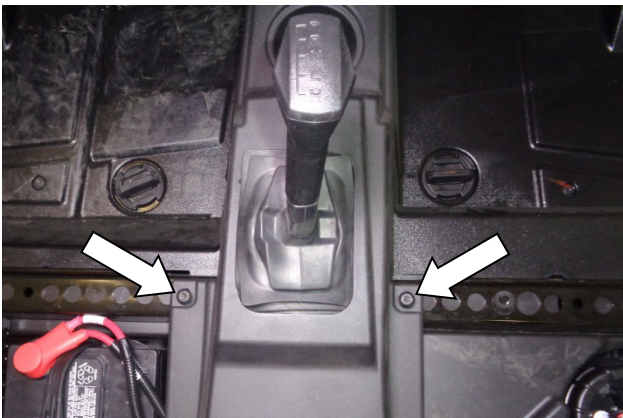
1. Securely chock the vehicle's wheels to keep it from rolling when the shift lever is manipulated.



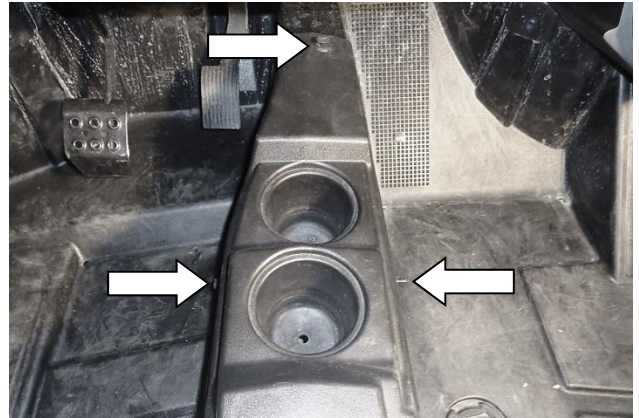
2. Remove the seats from the vehicle to allow for removal of the center console.



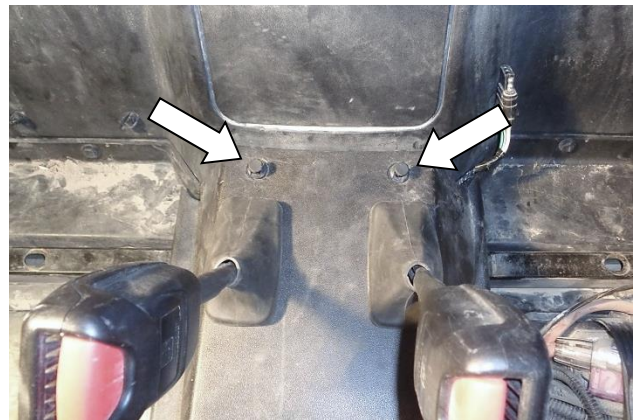
3. Put the shifter into NEUTRAL, then push the outer edge of the rubber boot down into the center console.



4. Remove and retain the two center console bolts (one on each side of the console).



5. Remove and retain the three plastic push rivets at the front of the console. (Note any differences between the push rivets, if any, to ensure correct reassembly.)



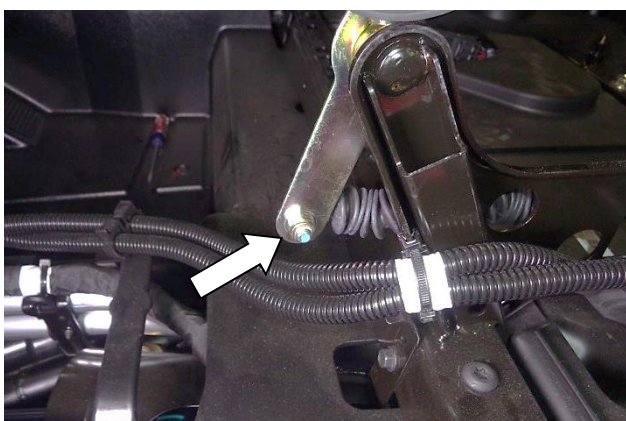
6. Remove and retain the two plastic push rivets at the rear of the console.



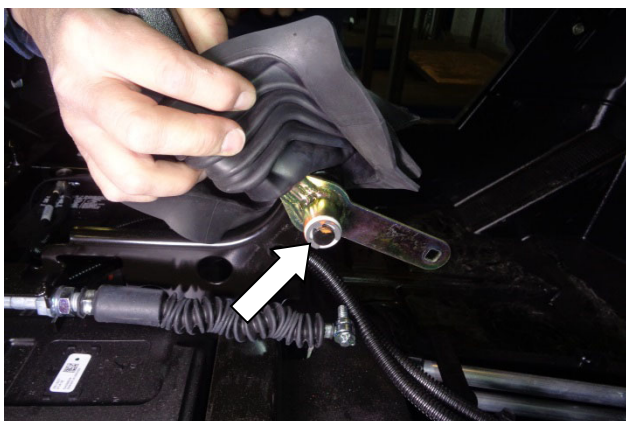
7. At the two seat belt buckles, push the rubber boots down into the console.



8. Remove the center console from the vehicle.



9. Ensure the shifter is in NEUTRAL, to allow access to the shift cable lock nut. Remove and retain the nut, and disconnect the cable from the shift lever.



10. Remove and retain the E-clip.

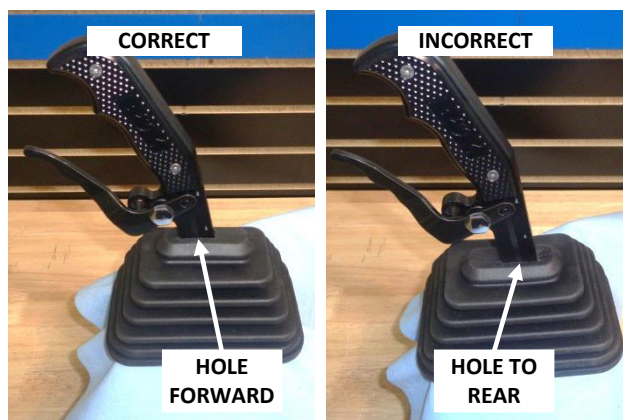


11. Remove the shift lever from the pivot shaft, taking care not to lose the nylon bushings in each end of the bore.



12. Remove and retain the two bushings.

INSTALL YOUR B&M GATED SHIFTER:



13. Ensure that the boot is oriented on the shift lever with the hole facing forward. If not, orient the boot correctly by carefully rotating it around the lever.

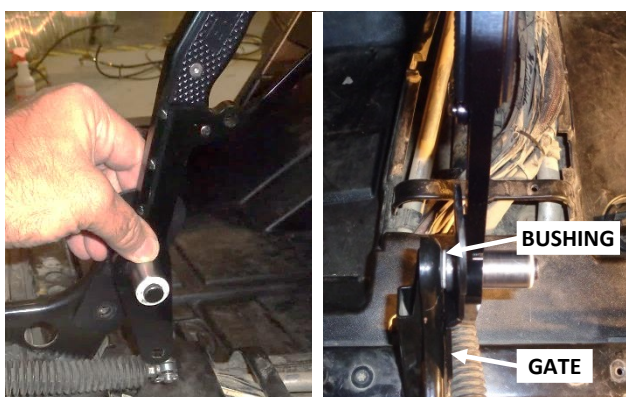
NOTE: For clarity, the shifter boot is not shown in Steps 14–20.



14. Install one nylon bushing in each end of the pivot sleeve in the shift lever assembly (1).



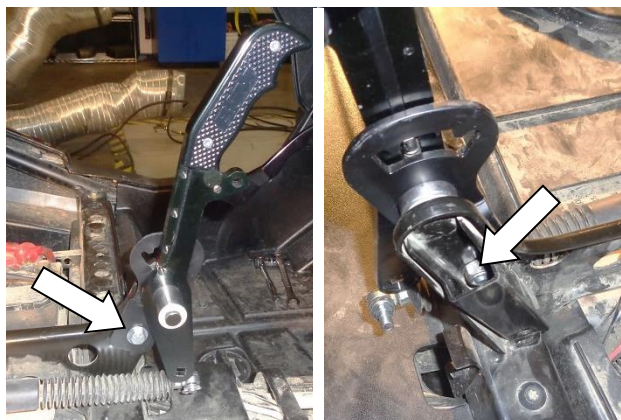
15. Place the shifter gate (4) over the pivot sleeve, so that the selector pin is located in the gate's REVERSE-NEUTRAL (widest) notch.



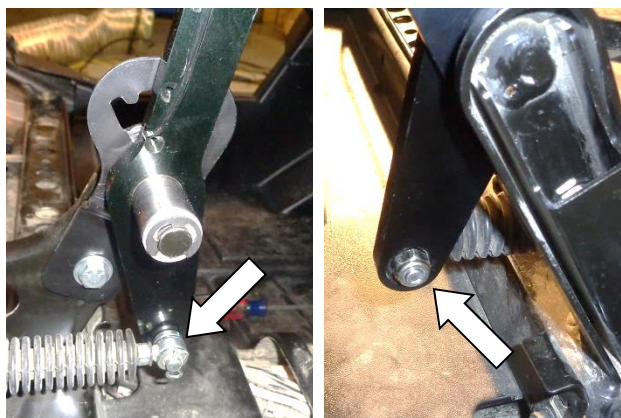
16. Hold the gate and shift lever together and slide them onto the shift lever shaft. Ensure that both the gate and nylon bushing are fully flush against the shifter support frame.



17. Install the retaining clip on the end of the shaft.



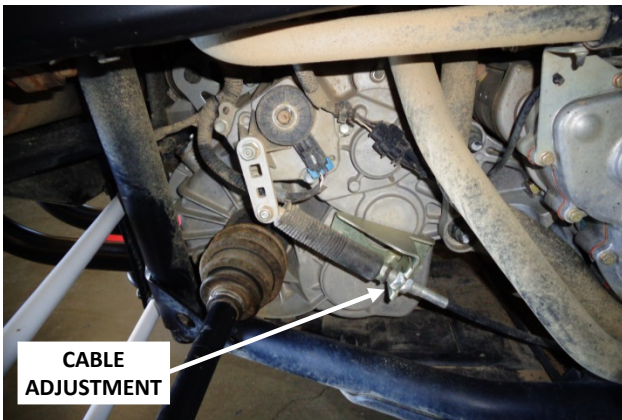
18. Fasten the gate to the shifter support frame using the screw (2) and flat washer (3) (on the passenger side), and lock nut (5) (on the driver side).



19. Insert the cable-end screw in the hole at the bottom of the shift lever, seating its square shoulder in the hole. Secure the cable end to the lever with the stock lock nut.



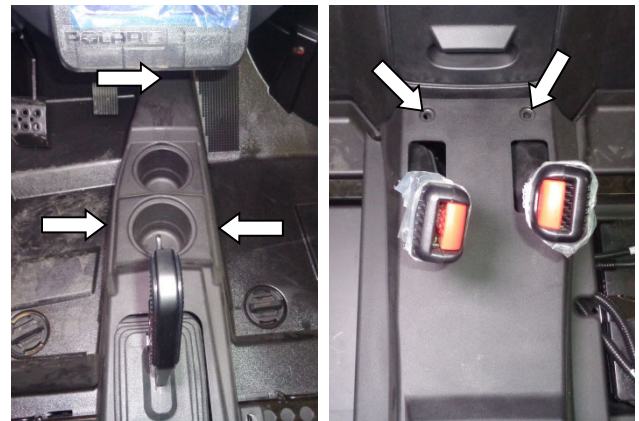
20. Move the shift handle from PARK to HIGH and back several times, releasing the locking lever at both positions. If the selector pin falls into both the PARK and HIGH detents when the locking lever is released, the shift cable is correctly adjusted.



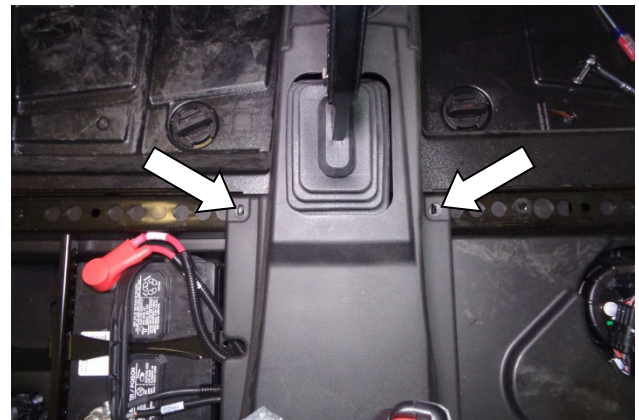
21. If the selector pin only falls into one of the detents, adjust the shift cable according to your owner or maintenance manual.



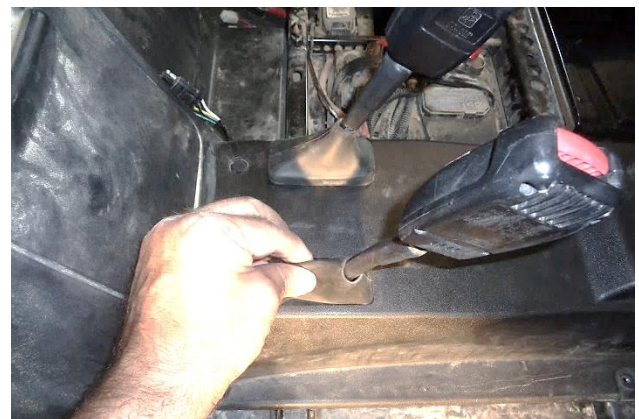
22. Install the center console.



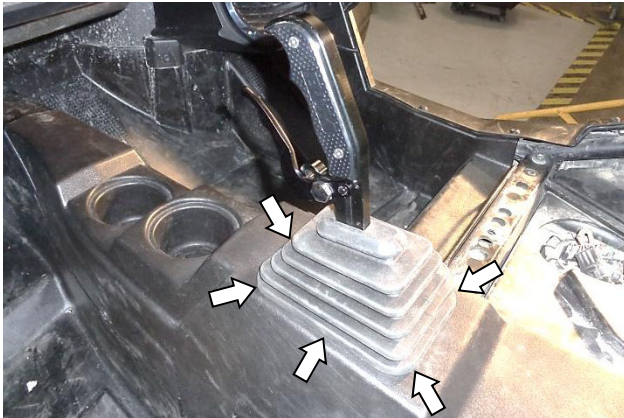
23. Secure the console with the five plastic push rivets.



24. Install the center console bolts (one on each side of the console).



25. Pull the seat belt dust boots up through the console until they snap into their holes.



26. Carefully pull the shifter boot upward until its groove fully engages the console opening.



27. Reinstall the seats in the vehicle.

Congratulations, the installation of your B&M Magnum Grip Gated Shifter is now complete!

Customize your new Gated Shifter with B&M Magnum Grip Accessory Side Plates! Available in diamond knurl polycarbonate (seven colors); rosewood; and billet aluminum (black, natural, or natural with a momentary switch).

